

Differential Mode Filter for Fluorescent Lighting Applications

FL Series



UL Listed



3FL3

FL Series

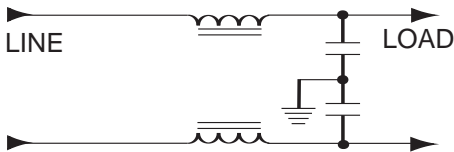
This filter is specifically designed to control the conducted emissions out of fluorescent lights, which are predominately differential mode (line-to-line). It is particularly effective for use in industrial environments, where it may also be used to better protect susceptible equipment from broadband conducted noise and inductive switching transients.

Specifications

Hipot rating (one minute):	
line-to-ground	1560 VAC
line-to-line	1560 VAC
Operating frequency:	50/60 Hz
Rated voltage:	125/280 VAC
Rated current:	3.9 Amps
Typical insertion loss in dB:	
Line-to-line in 50 ohm circuit	

Current Rating	Frequency-MHz						
	.15	.3	.6	1	4	10	20
3.9A	10	18	34	46	56	38	26

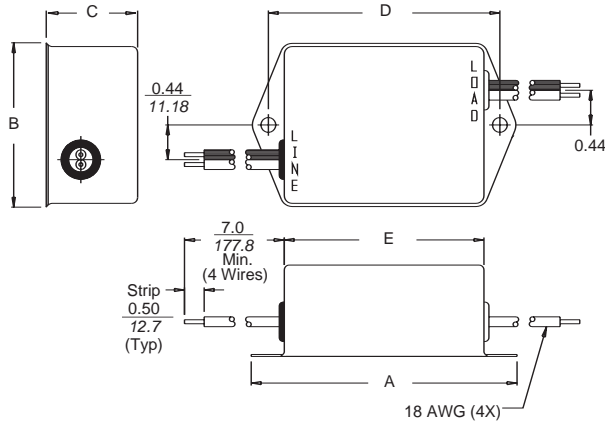
Electrical Schematic



Differential Mode Filter for Fluorescent Lighting Applications (Continued)

FL Series

Case Style



Case Dimensions

Part No.	A (max)	B (max)	C (max)	D $\pm .015$ $\pm .38$	E (max)
3FL3	3.35 <i>85.09</i>	2.56 <i>65.02</i>	1.16 <i>29.5</i>	2.938 <i>74.63</i>	2.57 <i>65.3</i>

Part Number

3FL3